

**FEBRUARY
2026**



MetPac-SA

Driving Sustainable Metal Packaging

NEWSLETTER

FOR THE  OF PACKAGING

FROM THE CEO'S DESK

February is the month of love, and in this edition of our newsletter, we celebrate our love and passion for packaging, specifically metal packaging.

Metal packaging is truly one of the most versatile and sustainable forms of packaging available today. Strong, lightweight and endlessly adaptable, it protects and preserves products across countless industries. Most importantly, it is infinitely recyclable without any loss of quality — a remarkable characteristic that positions it at the heart of the circular economy.

However, our love for metal packaging goes beyond its technical strengths. Its collection and recycling create meaningful economic opportunities, touching the lives of thousands of collectors, recyclers, transporters, and manufacturers across South Africa. Every can returned and every ton recycled represents not just environmental progress, but livelihoods supported and communities strengthened.

At MetPac-SA, we are privileged to work alongside many passionate, committed individuals who are driven to improve not only our industry, but the entire value chain — from manufacturing to collection and recycling. Our focus remains on building a resilient, responsible and forward-thinking metal packaging sector that contributes positively to both the economy and the environment. In this issue, we invite you to read more about some of the exciting projects we are currently driving... initiatives designed to strengthen collection systems, improve recycling rates and support the many people whose daily work keeps metal packaging circular.

Thank you for being part of this journey with us. Together, we continue to demonstrate that when it comes to sustainability, performance, and impact — proving that metal packaging truly delivers!

Dr Kishan Singh

www.metpacsa.org.za



PLANTING KNOWLEDGE, GROWING IMPACT

The Measurable Success of the Plant the Seed Project

Education remains one of the most powerful levers for driving long-term behavioural change in South Africa's waste and recycling landscape. In 2025, the Plant the Seed Zero Waste educational project demonstrated just how transformative that lever can be thanks to the support and commitment of industry partners such as MetPac-SA.



Addressing the Education Gap in Waste Management

The project was built on a clear and urgent vision: to empower South Africans with knowledge about recycling and the circular economy, addressing the education and knowledge deficit around waste management and ultimately increasing recycling rates.

At the heart of this initiative is a free 12-part Zero Waste video series, tailored specifically for South African audiences and made accessible with Afrikaans and Xhosa subtitles. Without MetPac-SA's belief in the project and financial backing, this high-quality educational resource would not have been possible.

The series covered critical topics including:

- The Waste Hierarchy
- Recycling & Separation at Source
- PET Plastic
- Tins and Metals
- Food Waste
- Polystyrene
- Paper
- E-waste
- HDPE
- Littering and Illegal Dumping
- Buy-back Centres
- Hazardous Materials

Reaching Thousands: Education at Scale

The educational reach achieved in 2025 was significant:

- 12 videos produced
- 199,947+ total video views
- 109,529 impressions across social media
- 147,804 views directly through Plant the Seed school network
- 12,317+ learners inspired per video
- 26 Zero Waste Champions identified across 11 schools and 6 businesses

The content was distributed through:

- Direct school assemblies and classroom sessions
- Parent newsletters
- YouTube (full-length versions)
- LinkedIn (full-length professional audience content)
- Instagram (short-form reels to maximise engagement)

This blended approach ensured both depth (structured school engagement) and breadth (public digital reach).



For an industry focused on improving recycling rates and material recovery, education at this scale lays critical groundwork for long-term systems change.

**Beyond Awareness:
Infrastructure That Enables Action**

While education sparks awareness, infrastructure enables behaviour change. Through a proud partnership between MetPac-SA and Safripol, the Zero Waste Toolkit was successfully implemented in six schools in Sasolburg and Vanderbijlpark:

- Sasolburg High
- Vaalpark High
- Vaalpark Primary
- Noord Primary
- Bekezela Primary
- Cedar Secondary

Infrastructure Deployed

- 300 bins installed, including:
 - 180 wheelie & barrel bins
 - 120 classroom paper bins
 - 6 double-ton bag cages
- 90 educational posters

Education Delivered

- 5,322 individuals inspired
 - 5,135 learners
 - 135 teachers (SACE-accredited training)
 - 54 ground and kitchen staff

This holistic model (infrastructure plus education) ensures that separation at source is not a once-off activity, but a sustained school-wide practice.

Tangible Environmental Results

From February to December 2025, the results were measurable and significant:

- **8,672.8 kg** of recyclables diverted from landfill
- **11.78%** of total recyclables were metals
- December recorded the highest diversion month at **2,165 kg**
- Post-intervention improvements tripled collection volumes in the final four months compared to the first five months
- Sasolburg High contributed **51.65%** of total recyclables diverted

Importantly, the project also supported local collection infrastructure by strengthening Indaloyami's business model through a funded retainer and consistent recyclable volumes — further embedding circular economy principles into the local economy

“When awareness, infrastructure and collection systems work together, diversion rates improve dramatically”



109,529

Total video series impressions

26 in **4**
Zero Waste Champions Provinces



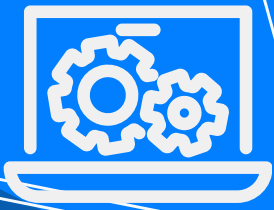
6 New Zero Waste Champions

Vaalpark Primër/Primary
CEDAR SECONDARY SCHOOL

300 Bins deployed
R28,800 Funds invested into Lucas

5,322 Inspired Individuals
8,672.8 kg Total waste diverted





ADVANCING RECYCLING EFFICIENCY

EASTERN CAPE RECYCLERS ROLL OUT LARIAT SYSTEM

In a significant move toward modernising waste management and resource recovery, Eastern Cape Recyclers has commenced the implementation of the Lariat System across its network of buy-back centres. This technological leap is designed to enhance operational transparency, streamline transaction processing and provide robust data reporting capabilities essential for the evolving recycling landscape in South Africa.



A Digital Transformation for Buy-Back Centres

The Lariat System, developed by Pretoria-based Lariat Technologies, is a specialised software suite tailored for the recycling and scrap metal industry.

Known for its flagship products like RecycleProX and the AMPLO platform, Lariat Technologies provides tools that integrate material weighing, dynamic pricing, and real-time inventory management. For buy-back centres, the system offers a critical digital bridge, replacing manual record-keeping with automated, audit-ready data.

Key features of the Lariat platform include:

- **Real-Time Transaction Tracking:** Automated generation of digital invoices and receipts, ensuring every kilogram of material is accounted for.
- **Regulatory Compliance:** Built-in support for digital police registers and environmental reporting, helping centres meet stringent industry standards.
- **Operational Analytics:** Comprehensive reporting tools that allow managers to monitor performance trends and optimize inventory flow.

Strengthening the Recycling Value Chain

The adoption of the Lariat System by Eastern Cape Recyclers aligns with broader industry goals championed by organisations such as Metpac-SA. By digitising the "first mile" of the recycling process, i.e. the point where waste pickers and community members interact with buy-back centres, the industry gains better visibility into material recovery rates and supply chain efficiency.

For recyclers, this implementation is more than just a software upgrade; it is a commitment to professionalising the sector. The data captured through the Lariat System will provide the transparency needed to attract further investment and support the sustainable growth of recycling initiatives in the Eastern Cape.



LARIAT SYSTEM: IMPLEMENTATION AND TRAINING HIGHLIGHTS

The roll-out reached a key milestone in early February 2026. On 5 February, the Lariat System was successfully installed at the Mthatha North Buy-Back Centre. While the hardware and software setup was completed as scheduled, local infrastructure challenges (specifically the lack of stable Wi-Fi connectivity) required a flexible approach to the subsequent training phase.

To ensure the team was fully equipped to utilise the new technology, training was relocated to the Mthatha South Buy-Back Centre on 6 February. Leveraging the stable internet access at the South site, the system installer, conducted a comprehensive training session for operational staff. The curriculum focused on:

- Navigating the Lariat platform interface.
- Executing seamless transaction processing.
- Managing day-to-day operational workflows through the digital system.



EXPANDING REACH: AN 8TH RECYCLING EMBRACES LARIAT

Further demonstrating the positive impact of such technological advancements, **An 8th Recycling**, a 100% black youth-owned enterprise in Lephalale, has also benefited from the implementation of the Lariat System. Founded by brothers Christopher and Piet Molebatsi, who are deeply committed to environmental stewardship and community upliftment, An 8th Recycling employs 10 full-time staff and supports approximately 1 000 waste pickers and community members by purchasing their recyclables.

MetPac-SA has been instrumental in supporting An 8th Recycling, initially by providing essential Personal Protective Equipment (PPE) to enhance staff health, safety, and regulatory compliance, which also significantly boosted morale. Recognising the challenges of manual record-keeping, MetPac-SA further assisted the SME with the adoption of the Lariat System. This crucial intervention enables An 8th Recycling to efficiently track sales and ensure accurate payment of service fees to their network of waste pickers, thereby improving operational integrity and supporting the livelihoods of many.



LEPHALALE CASH FOR SCRAP

METPAC-SA REGISTERS 128 WASTE PICKERS IN EPR DRIVE



At the end of 2025, MetPac-SA proudly hosted a large-scale workshop focused on the registration and integration of waste pickers.

This initiative was aimed at enhancing access, empowerment, and meaningful participation in South Africa's recycling economy.

- Over 128 waste pickers were successfully registered in the Amplo system and received official waste picker cards.
- These cards provide access to service fee payments and formal recognition within the value chain.
- Additionally, 150 food hampers from Pick n Pay were donated to support participants on that day.

This initiative exemplifies Extended Producer Responsibility (EPR) in action, promoting inclusion, improving livelihoods, and highlighting the essential role waste pickers play in the country's expanding circular economy.



TURNING DATA INTO IMPACT AT MAVAVELE BUY BACK CENTRE

MetPac-SA and Mavavele BBC Collaborate on Waste Characterisation

On 11 February 2026 something powerful happened at Mavavele Buy Back Centre (BBC). It wasn't just a waste characterisation exercise — it was a practical demonstration of what passion for metal packaging looks like when industry and community come together with purpose.

A Legacy Built on Commitment

Mavavele Buy Back Centre was established in 2001 by Mr Lindizwe Harry Ngidi, who continues to serve as its owner and driving force. For more than two decades, Mr Ngidi has shown what sustained dedication to waste management and community upliftment can achieve.

Today, the centre works with more than 150 waste pickers who collect a wide range of recyclables, including:

- Aluminium beverage cans
- Tin food cans
- Steel and car parts
- PET plastics
- HD plastics
- Crushed glass

While Mavavele handles multiple material streams, metal packaging remains a critical component of its recovery activities, ensuring valuable aluminium and steel packaging is captured and channelled back into the formal recycling value chain.

Expanding Impact in Umgeni

In recognition of its outstanding contribution to the community, Mavavele has been awarded a new Buy Back Centre site in Umgeni.

The new facility will focus on the collection of:

- Aluminium cans
- Tin food cans
- Steel
- Car parts

This expansion represents more than growth — it represents opportunity.

**“It is through initiatives like these that
passion meets professionalism”**



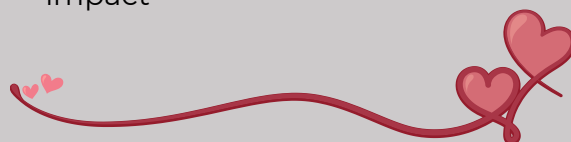
The MetPac-SA team with Lungile Ngidi and Mr Harry Ngidi

Why Waste Characterisation Matters

The waste characterisation project conducted in partnership with MetPac-SA focused specifically on assessing and reporting metal packaging streams recovered through Mavavele's operations.

Accurate data is a compliance requirement and forms the backbone of strategic planning, recovery rate improvement and responsible industry reporting. By strengthening data accuracy and reporting mechanisms, this initiative supports:

- Improved compliance reporting
- More reliable recovery statistics
- Enhanced strategic planning for the metal packaging sector
- Stronger evidence of industry impact





The CEO of MetPac-SA Dr Kishan Singh with Mr Harry Ngidi

Leadership Rooted in Partnership

MetPac-SA CEO, Dr Kishan Singh, commended Mavavele Buy Back Centre for its significant contribution to the waste management sector and reaffirmed MetPac-SA's commitment to ongoing support for Mavavele's recycling initiatives across South Africa.

MetPac-SA's strengthened partnership with Mavavele includes:

- Enterprise development support
- Provision of Personal Protective Equipment and Supplies (PPES) for waste pickers
- Capacity building and training initiatives

This support reflects a shared belief: sustainable recycling depends on strong enterprises, empowered waste pickers and credible data.

In collaboration with MetPac-SA, the Mavavele team opened their yard, their systems and their story to support a focused waste characterisation project aimed at accurately quantifying and reporting on metal packaging recovered within the market.

The collaboration between MetPac-SA and Mavavele Buy Back Centre represents a strong model of partnership between industry and community-based recycling enterprises.

The waste characterisation project not only improves reporting accuracy for metal packaging recovery, but also reinforces sustainable development, enterprise growth and community empowerment within the recycling sector.

A Model for Industry and Community

The collaboration between MetPac-SA and Mavavele Buy Back Centre stands as a powerful model of partnership between industry and community-based recycling enterprises.

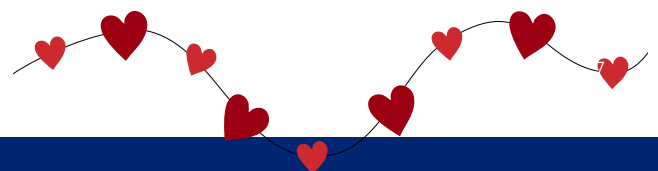
The waste characterisation project does more than improve reporting accuracy for metal packaging recovery. It reinforces:

- Sustainable development
- Enterprise growth
- Community empowerment
- A stronger, more transparent recycling ecosystem

Mr Ngidi reaffirmed his commitment to community empowerment through a flexible payment model designed to support waste pickers.

Waste pickers are paid in the morning for early collections and again in the afternoon for later deliveries. This system provides accessibility, financial flexibility and dignity. This is practical support that keeps the informal sector active and motivated!

Metal packaging never loses its value. That is what it means to recycle with purpose. That is what it means to lead with passion. And that is truly for the Love of Metal Packaging.





METPAC SA AND EASTERN CAPE RECYCLERS NPC SUPPORT WASTE PICKERS WITH PPE HANDOVER IN EASTERN CAPE



Eastern Cape Recyclers NPC, in partnership with MetPac SA, recently made a significant contribution toward improving the safety, working conditions and dignity of waste pickers in the Eastern Cape. As part of an ongoing initiative to strengthen inclusive recycling systems, a Personal Protective Equipment (PPE) handover was conducted at KSD Local Municipality, Ward 11.

Supporting Waste Pickers on the Frontline of Recycling

Waste pickers are essential to the recycling value chain, collecting, sorting and diverting materials that would otherwise end up in landfills. Despite their critical role, many operate under challenging and hazardous conditions, often without access to adequate protective clothing and equipment. Exposure to sharp objects, contaminated materials and harsh weather creates significant health and safety risks.

The PPE handover aimed to address these challenges by providing waste pickers with essential safety gear. Donated by MetPac SA and distributed by Eastern Cape Recyclers NPC, the PPE helps reduce risks, improve working conditions, and acknowledges waste pickers as vital environmental workers.

A Strong Partnership for Social Impact

The collaboration between MetPac SA and Eastern Cape Recyclers NPC demonstrates the power of partnership between producer responsibility organisations and community-based recycling groups. MetPac SA's donation reflects a commitment to sustainable waste management, while Eastern Cape Recyclers NPC's grassroots presence ensures that support reaches those who need it most.



PPE Handover Event at KSD Ward 11

The event was attended by waste pickers from the local area, Eastern Cape Recyclers NPC representatives and community stakeholders. The handover was coordinated by the organisation's local team, working closely with Andile Abenta from Eastern Cape Recyclers NPC.

The occasion was marked by celebration and gratitude. Waste pickers expressed their appreciation through song, including a tribute referencing MetPac SA: "MetPac SA abamaziyo abazange bambone" – loosely translated as "those who know MetPac SA have never actually seen them." This song symbolised trust and recognition, highlighting the value waste pickers place on MetPac SA's support, even in the absence of a physical representative.

What Was Distributed?

The PPE provided included protective items designed to safeguard waste pickers from injury, contamination and hazardous materials. With this equipment, waste pickers are better equipped to carry out their work safely and efficiently, reinforcing that their health, safety and dignity are a priority.

"This partnership highlights how structured collaboration can create safer, more inclusive recycling systems that benefit both communities and the environment..."

Positive Impact and Lessons Learned

The handover had an immediate impact, with waste pickers expressing gratitude for being formally recognised and supported. The PPE not only reduces physical risks but also restores dignity, boosts morale and strengthens the sense of inclusion in the recycling system.

Eastern Cape Recyclers NPC continues to support waste pickers beyond PPE distribution through registration, training, system implementation and the development of buy-back centres across the Eastern Cape.

The event also highlighted ongoing challenges in the sector, such as limited infrastructure and inconsistent support, underscoring the need for sustained engagement and partnership.



Moving Forward



The PPE handover demonstrates the tangible impact of collaboration between MetPac SA and Eastern Cape Recyclers NPC. By addressing occupational health and safety needs and promoting recognition for waste pickers, the initiative contributes to more organised, inclusive and sustainable recycling systems in the Eastern Cape.

Both organisations remain committed to expanding support for waste pickers across the province, ensuring safer working environments, stronger partnerships and a positive impact on communities and the environment



METPAC-SA SUPPORTS WASTE PICKERS HEALTH AWARENESS CAMPAIGN IN SOWETO

On 20 February 2026, MetPac-SA honoured and participated in the Waste Pickers Health Awareness Campaign held in Meadowlands, Soweto. The event was hosted by the South African Waste Management Council in collaboration with the Gauteng Department of Health and brought together a wide range of stakeholders committed to improving the working conditions and wellbeing of waste pickers.

Among the key organisations in attendance were Petco, eWASA, Fibre Circle, the Gauteng Department of Environment and the City of Johannesburg. Distinguished guests included Ms Nomantu Nkomo-Ralehoko, MEC for the Gauteng Department of Health and Mr Ewan Botha, MEC for the Gauteng Department of Environment

Supporting Health, Safety and Compliance

MetPac-SA's support for the campaign was both practical and impactful. The team:

- donated gloves, branded reflective vests and hats to waste pickers participating in the clean-up next to Meadowlands Clinic;
- exhibited at the event, engaging directly with waste pickers and explaining how to register for service fees;
- paid the Fire Department floor plan approval fee to ensure that all compliance requirements were met and that the event could proceed without delay.

A total of 173 waste pickers attended the campaign. The majority currently sell their recyclables to WestWorld Recycling in Roodepoort, which provides transport to collect material from waste pickers' homes due to the distance between Meadowlands and Roodepoort.

Rolling Out to Other Provinces

This campaign marks an important step in strengthening relationships with waste pickers while improving health awareness, safety standards and access to formalised payment systems. Plans are underway to roll out the Waste Pickers Health Awareness Campaign to other provinces, further advancing inclusion and support for this vital sector.

MetPac-SA remains committed to empowering waste pickers, enhancing safe working conditions and driving greater participation in formal recycling value chains across South Africa.

Driving Registration and Digital Inclusion

It was noted that only a small number of waste pickers are currently registered with Lariat at WestWorld Recycling. However, there is encouraging momentum: two buy-back centres (BBCs), namely Mr Bin (Protea Glen) and Queen Buyback Centre, have expressed interest in implementing the Lariat system.

To build on this progress, the following actions have been identified:

- AMPLO cards will be made available to Vhengani to enable the registration of waste pickers during a 10-day pilot project.
- Site visits will be conducted at the two interested BBCs to assess their eligibility for the Lariat system and determine what support is required, using standardised templates and checklists.



METPAC SA & WALTER SISULU LOCAL MUNICIPALITY PPE HANDOVER EVENT

ADVANCING DIGNITY, SAFETY AND SUSTAINABILITY

MetPac SA recently reaffirmed its commitment to a landmark partnership with the Walter Sisulu Local Municipality (WSLM) through a meaningful PPE handover event held at the Joe Slovo Community Hall.

This event builds on the Memorandum of Understanding (MoU) signed late last year between MetPac SA and WSLM, alongside a similar MoU concluded at provincial level, focused on improving waste pickers' working conditions and dignity, promoting occupational health and safety, rolling out education and awareness programmes, and supporting the full implementation of the municipality's Integrated Waste Management Plan (IWMP).



Bringing Stakeholders Together

The event brought together representatives from local, district, provincial and national government, as well as industry and the recycling sector, to celebrate progress and deliver tangible support to waste pickers.

Attendees included:

- Loyiso Mdiya, Assistant Manager Environmental Affairs, DEDEA
- Mr Zolani Pungwani, Director Community Services, WSLM
- Sivuyile Mbobo, Manager Waste Management Services, WSLM
- Sinazo Mdeleleni, Municipal Environmental Officer, DFFE
- Zisiphe Mtolo, Environmental Health Practitioner, Joe Gqabi District Municipality
- Zoleka Betana, WSLM Councillor
- Mlamli Papu, Treasurer, Eastern Cape Recyclers NPC
- Bongani Mzantsi, Chairperson, Eastern Cape Recyclers NPC
- Belinda Booker, Recycling and Enterprise Development, MetPac SA
- Khosi Mbhata, Project Manager, MetPac SA
- Palesa Soma, Petco
- Waste pickers and community guests

Tangible Support: PPE Handover

A key highlight of the event was the handover of essential personal protective equipment (PPE) directly to waste pickers. Items distributed included overalls, gloves, boots, reflector vests, T-shirts and hats.

This practical intervention significantly improves safety on the job, reduces the risk of injuries, and enhances the dignity of waste pickers—recognising their critical role in South Africa's recycling value chain and circular economy.



The Eastern Cape Recyclers NPC registered waste pickers on the Amplo cash-free payment system, ensuring transparent payment of the Extended Producer Responsibility (EPR) service fee from Producer Responsibility Organisations (PROs) like MetPac SA. Registered waste pickers will earn an extra 15 cents per kilogram for qualifying materials, acknowledging their vital role in recycling. This handover is the first significant outcome under the MoU, indicating strong progress in the partnership.





MetPac-SA Welcomes New Leadership and Strategic Support

MetPac-SA is pleased to announce significant changes to its Board of Directors, marking a new chapter in the organisation's commitment to driving sustainable metal packaging initiatives. These appointments reflect a dedication to strong leadership and continued industry expertise.

Acknowledging Outgoing Leadership: Mark Helfrich

MetPac-SA extends its deepest gratitude to **Mark Helfrich**, who retired from his role as Chairman at the end of December 2025, concluding a distinguished 30-year career at Nestlé. As Packaging Engineering Manager for Nestlé East and Southern Africa Region (ESAR), Mark was instrumental in revolutionising packaging approaches, championing plastic neutrality and driving sustainable practices within the industry.

During his tenure as Chairman of MetPac-SA, Mark provided clear guidance and fulfilled a valuable role in the association's growth and strategic direction, leaving a lasting legacy of innovation and commitment to sustainability.



New Appointments to the Board

Following Mark Helfrich's retirement, proposals were invited for the position of Chair. **Bridget Zuma-Rubambura** enthusiastically volunteered and was subsequently appointed unanimously by the board.

Ms. Zuma-Rubambura brings a wealth of experience to this role. As the Metals & Energy Market Manager at Hulamin, she possesses a deep understanding of the industry. Her background as a metallurgical engineer with a Master's degree specialising in welding, coupled with her entrepreneurial ventures, positions her as a dynamic leader for MetPac-SA. She has also been actively involved with the South African Stainless Steel Development Association (SASSDA) and the Aluminum Federation of South Africa (AFSA).



Similarly, **Tsholofelo Mqhayi** volunteered for the position of Vice Chair and received unanimous appointment. Ms. Mqhayi currently the Head of Sustainability at Coca-Cola Beverages South Africa (CCBSA), is a prominent figure in sustainability initiatives within the beverage sector. Her appointment also signifies her role as the new CCBSA representative on the MetPac-SA board, succeeding Ntsako Baloyi.



Acknowledging a Valued Contribution

MetPac-SA extends its sincere gratitude to **Ntsako Baloyi** of CCBA Group, who has resigned from the Board. Mr Baloyi's contributions to the organisation have been highly valued, and his departure marks a transition as CCBSA has appointed Tsholofelo Mqhayi as her replacement, ensuring continued representation from the group.



Enduring Support from an Industry Veteran

Dr Kishan Singh, CEO of MetPac-SA, introduced **Charles Muller** as a pivotal figure in the establishment of MetPac-SA around 2013-2014. Mr. Muller, with an impressive 46 years of experience in the packaging industry, offered his unwavering support to the newly appointed Chair and Vice Chair. He previously served as the Executive Director of Packaging SA until 2018 and is currently the owner of Packaging & Plastic Services. Mr. Muller confirmed his continued commitment to serving MetPac-SA in a technical advisory capacity, without voting rights, ensuring that his extensive knowledge and insights remain accessible to the board.



METPAC-SA CHAMPIONS WASTE PICKER EMPOWERMENT IN LANDMARK TRAINING INITIATIVE



In a significant stride towards fostering a more inclusive and sustainable circular economy, MetPac-SA proudly supported a comprehensive 6-day accredited training programme for 35 self-employed material recyclers (waste pickers) in Emalahleni, Mpumalanga.

This initiative, a collaborative effort with ExxonMobil and Plastics SA, underscores MetPac-SA's unwavering commitment to empowering the informal recycling sector and enhancing metal packaging recovery across the nation.

The **"Self-Employed Material Recycler Training Programme"** was meticulously designed by the Plastics SA Academy for Learning and Development. Launched in November 2025, the programme saw 35 dedicated learners participate in two parallel training groups, ensuring optimal engagement and practical learning.

The curriculum was tailored to address the multi-faceted challenges faced by waste pickers, encompassing vital areas such as health and safety protocols, efficient waste handling techniques, foundational business management within the recycling economy and strategic approaches to maximise profits in a circular economy.

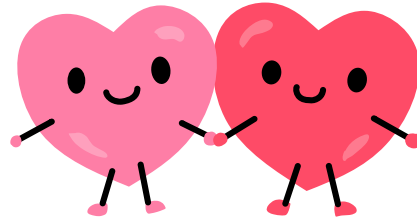
Kirtida Bhana, Head of the Plastics SA Academy, emphasised the benefits of targeted education for waste pickers to enhance their businesses and working conditions. Rik Poppe, Senior Sustainability Advisor at ExxonMobil, highlighted the informal sector's role, stating that training provides waste reclaimers with health and safety protocols, sorting techniques and business skills. He advocated for a multi-stakeholder approach to drive long-term change, suggesting the programme could serve as a global model.

MetPac-SA's contribution was pivotal to the success of this programme. While ExxonMobil generously covered the direct training costs, MetPac-SA took on the crucial responsibility of sponsoring the learner stipends and daily allowances. This financial support was instrumental, directly addressing a significant barrier for waste pickers, namely the loss of daily income when attending training.

By ensuring participants could attend without financial detriment, MetPac-SA not only facilitated access to invaluable skills development, but also demonstrated a deep understanding of the socio-economic realities of the informal recycling community.

“ This initiative perfectly aligns with MetPac-SA's core mission to establish the metal packaging industry as a valuable contributor to sustainable development through investment in post-consumer metal packaging recovery and reutilisation. By empowering waste pickers with enhanced skills and business acumen, MetPac-SA is directly contributing to increased recovery rates of metal packaging, fostering safer working environments and promoting economic upliftment within these communities. This collaborative model exemplifies the multi-stakeholder approach championed by industry leaders, paving the way for a more robust and equitable circular economy in South Africa and beyond.





CONTACT US

MetPac-SA is a Non-Profit Company (NPC), as defined in Section 21 of the Companies Act No. 71 of 2008, with registration number 2017/216419/08.

As the preferred Producer Responsibility Organisation (PRO) for metal packaging in South Africa, it is MetPac-SA's mission is to position the metal packaging industry as a significant contributor to sustainable development. We aim to achieve this through effective investments in the collection, recovery, and re-utilisation of post-consumer metal packaging.

MetPac-SA strives to unify the metal packaging value chain in South Africa, representing the perspectives of both industry and academia to all stakeholders.

Currently, MetPac-SA is focused on several key performance areas:

- Implementing the MetPac-SA Extended Producer Responsibility (EPR) strategy
- Assisting members in meeting their EPR obligations while encouraging new members to join MetPac-SA
- Monitoring overall statistics related to members against EPR targets to:
 - Promote input material through "design for recycling" principles
 - Ensure the accuracy of post-consumer metal packaging data and reporting
 - Support the circular economy of metal packaging in South Africa
- Providing assistance to municipalities, Buyback Centres (BBCs), recyclers, and waste pickers
- Promoting education and awareness initiatives.

kishan@metpacsa.org.za

ravi@metpacsa.org.za

rishant@metpacsa.org.za

belinda@metpacsa.org.za

khosim@metpacsa.org.za

info@circular-vision.com

bonte@circular-vision.com

annamarie@metpacsa.org.za

